



STEP RISER

STEP
300x1200mm | 300x1000mm | 300x900mm

RISER
200x1200mm | 200x1000mm | 200x900mm



STEP RISERS: ELEVATING EVERY STEP WITH STYLE AND DURABILITY

Step risers are more than just a structural element—they play a vital role in enhancing the overall aesthetic and safety of any staircase. Whether for residential or commercial spaces, our collection of step risers combines robust durability with exquisite design, offering solutions that complement any architectural style. Crafted with precision, our step risers not only add to the beauty of your staircases but also ensure long-lasting performance. From sleek modern finishes to timeless classic designs, each riser is engineered to elevate your space while providing a secure and comfortable step experience. Discover how the right step risers can transform ordinary stairs into a focal point of elegance and function.

KEY FEATURES OF OUR STEP RISERS



Durable Construction:

Crafted from high-quality ceramic, porcelain, and natural stone, our step risers are built to last, withstanding heavy foot traffic while maintaining their beauty over time.



Slip-Resistant Surface:

Designed with anti-slip surfaces for enhanced safety, these risers are ideal for both indoor and outdoor use, reducing the risk of accidents in wet or busy areas.



Water-Resistant:

Designed with non-porous surfaces, our step risers resist water absorption, ensuring durability and easy upkeep in moisture-prone areas like patios and bathrooms.



Easy Installation:

Precisely cut for a seamless fit, these risers simplify the installation process, saving time for both professionals and DIY enthusiasts.



UV and Weather Resistance:

UV- and weather-resistant, our risers are ideal for outdoor use, as they resist fading and damage from harsh elements.



Eco-Friendly Materials:

Made using sustainable practices, our step risers support green building while delivering high performance and style.

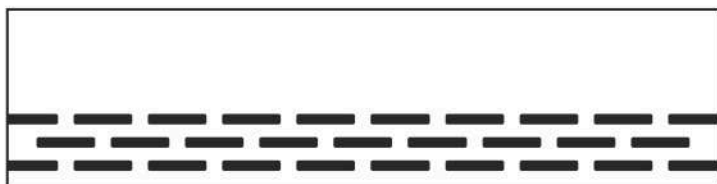


AVAILABLE SIZES



Steps: 300x1200mm | 300x1000mm | 300x900mm

Designed with anti-slip surfaces for enhanced safety, these risers are ideal for both indoor and outdoor use, reducing the risk of accidents in wet or busy areas.



Risers: 200x1200mm | 200x1000mm | 200x900mm

The riser tiles are crafted to match the steps, adding a cohesive look to your staircase design. These tiles elevate the vertical space between each step, bringing a clean and modern aesthetic to any staircase.



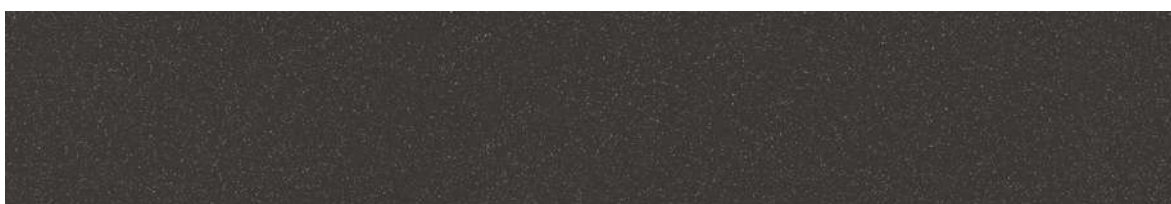
Landing Area Tiles: 600x1200mm | 600x1000mm | 600x900mm

For landing areas, our 600x1200mm tiles offer a wider surface, providing both durability and a refined appearance. Perfect for transitions between floors, these tiles ensure a seamless continuation of design throughout your staircases and landing spaces.





LEONARDO BLACK - STEP | 300x1200mm | 300x1000mm | 300x900mm

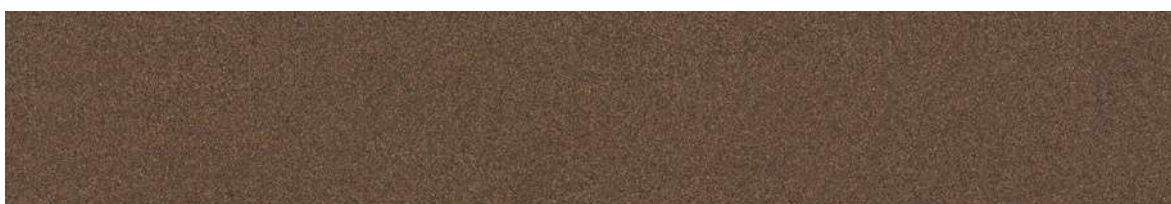


LEONARDO BLACK - RISER | 200x1200mm | 200x1000mm | 200x900mm





LEONARDO BROWN - STEP | 300x1200mm | 300x1000mm | 300x900mm



LEONARDO BROWN - RISER | 200x1200mm | 200x1000mm | 200x900mm



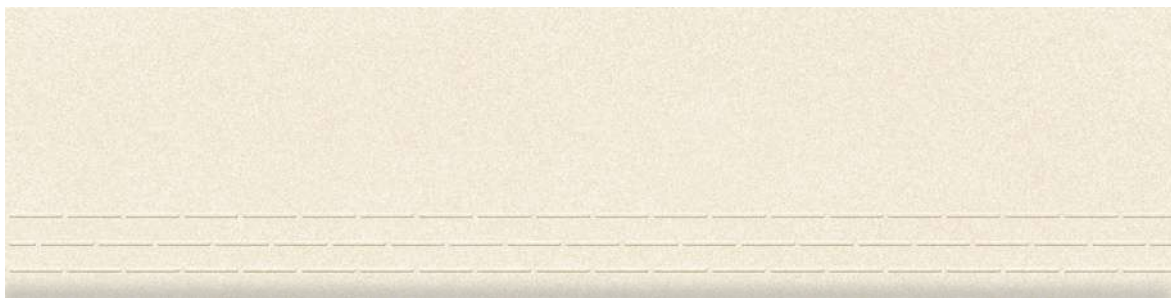


LEONARDO GREY WHITE - STEP | 300x1200mm | 300x1000mm | 300x900mm

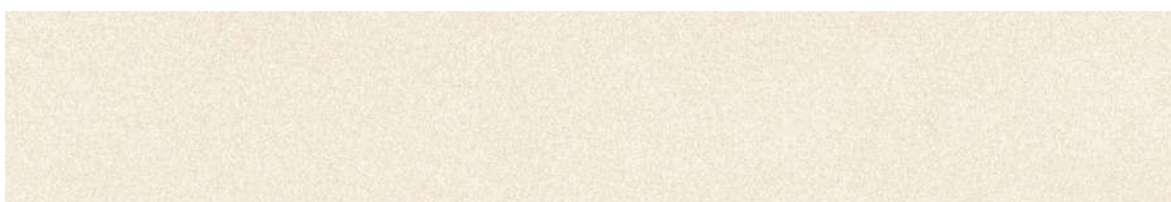


LEONARDO GREY WHITE - RISER | 200x1200mm | 200x1000mm | 200x900mm



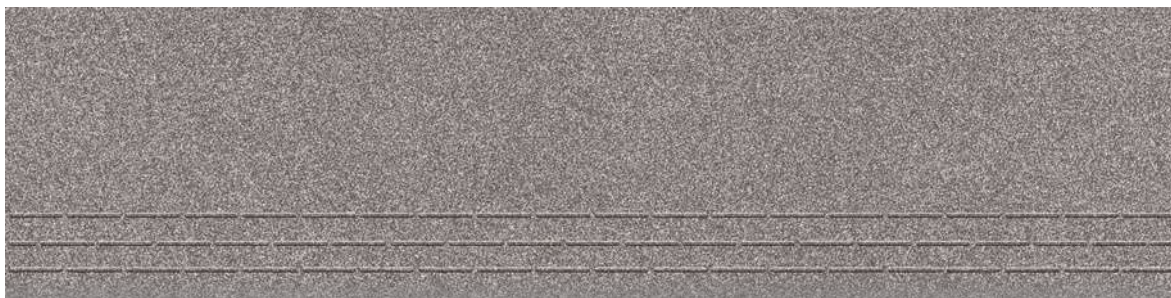


LEONARDO BEIGE - STEP | 300x1200mm | 300x1000mm | 300x900mm



LEONARDO BEIGE - RISER | 200x1200mm | 200x1000mm | 200x900mm



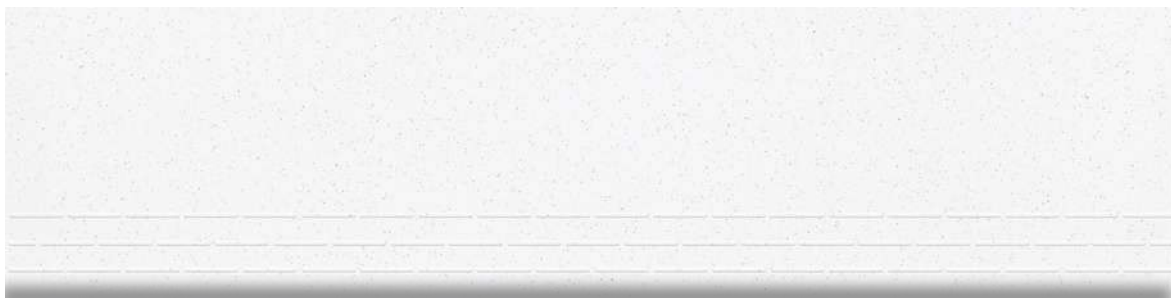


LEONARDO NERO - STEP | 300x1200mm | 300x1000mm | 300x900mm



LEONARDO NERO - RISER | 200x1200mm | 200x1000mm | 200x900mm





LEONARDO QUARTZ - STEP | 300x1200mm | 300x1000mm | 300x900mm



LEONARDO QUARTZ - RISER | 200x1200mm | 200x1000mm | 200x900mm





LEONARDO COOKIE - STEP | 300x1200mm | 300x1000mm | 300x900mm



LEONARDO COOKIE - RISER | 200x1200mm | 200x1000mm | 200x900mm





Divaqeramika.com

+383 49 600 046

divaqeramika@gmail.com

+383 49 668 382