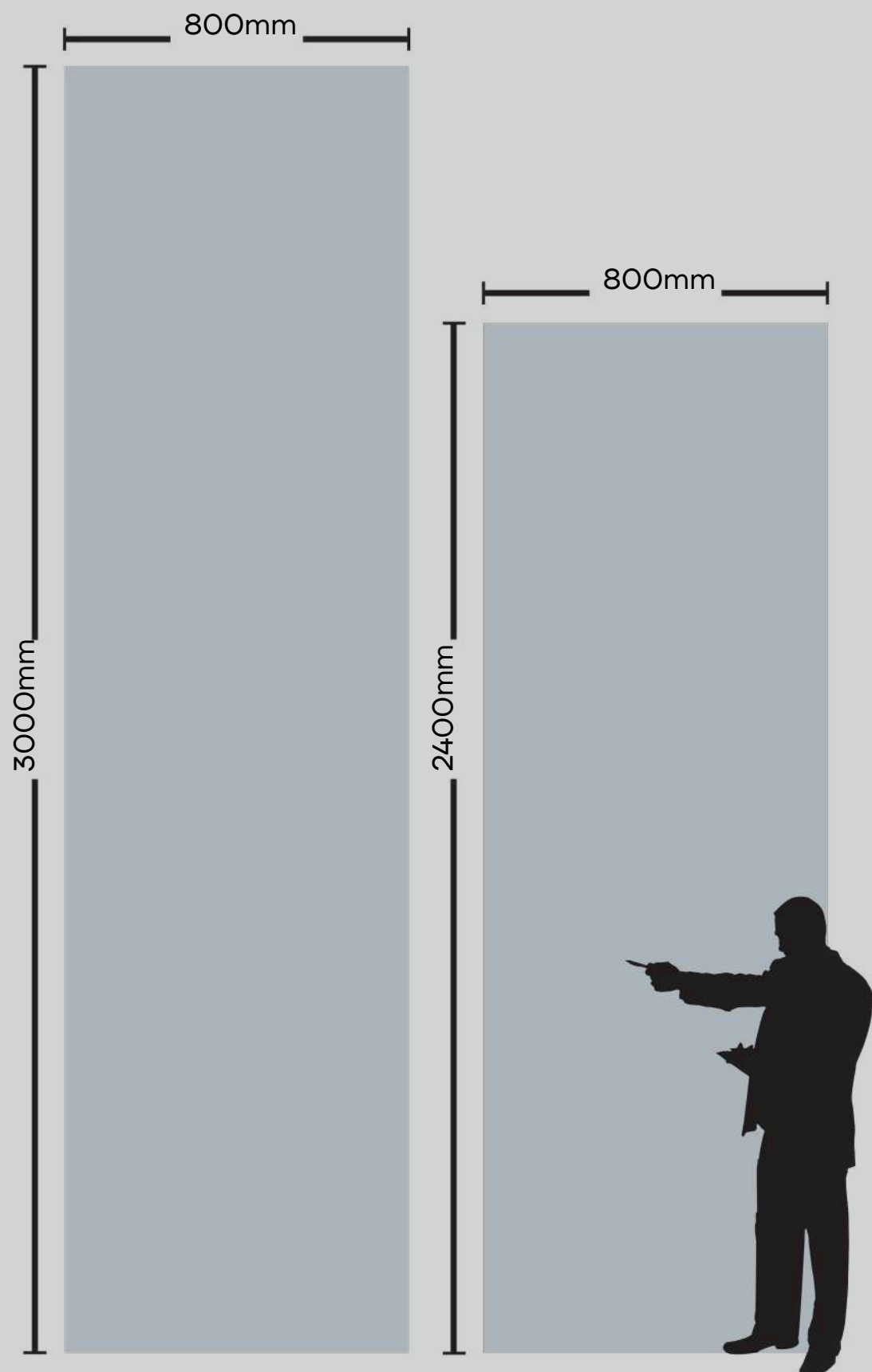


KOREAN  
SERIES



# PRODUCT

## FORMATS



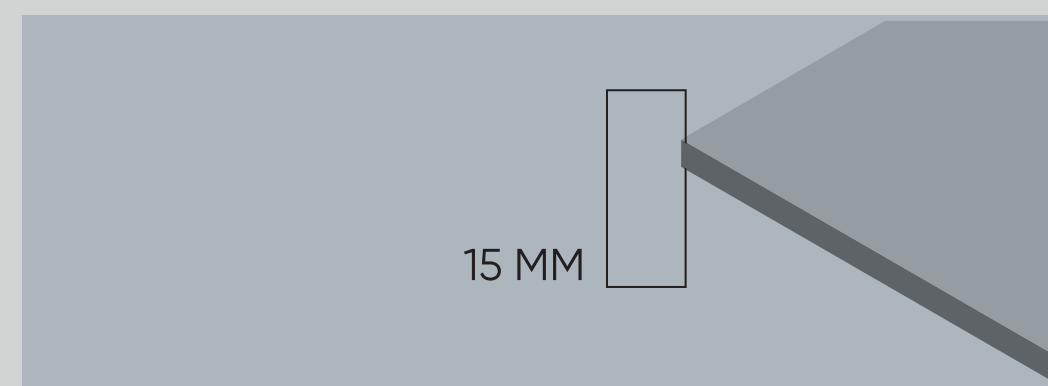
### SIZES

800x2400 MM | 800x3000 MM

TPOLOGY  
FULL BODY

FINISH  
GLOSSY / MATT

THICKNESS  
15 MM



The thicknesses are one of the most important elements characterizing.

15 MM is set aside for the most demanding product applications such as kitchen countertops.



KOREAN  
SERIES



5

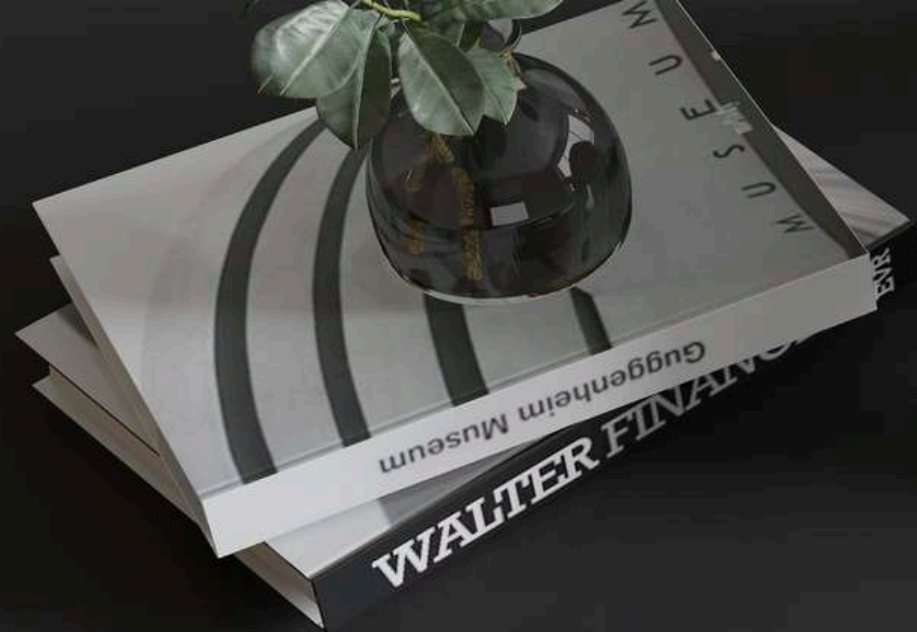
COLORS

Our collections offer professional  
grade performance while seamlessly blending

the latest innovations with a premium  
design aesthetic crafted with authentic, high-quality  
materials. Ducts.



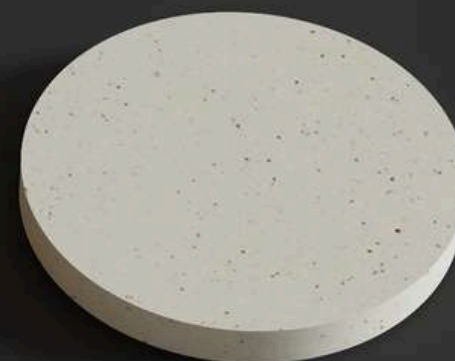




BASALT FEEL



VANILA PEPPER



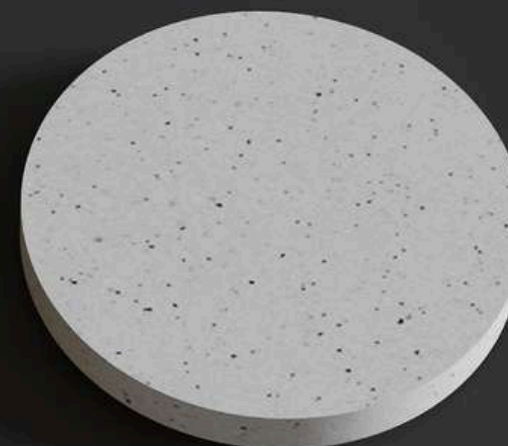
GREYLITE FEEL



LAVA ROCK



ICE QUEEN



---

**HERITAGE,  
ART,  
INNOVATION,  
DESIGN.**

Each slab is unique and authentically different from all the others: the dynamic harmony of the nuances shapes surfaces with an exclusive beauty.



← GLOSSY FINISH

MATT FINISH →



15 MM  
THICKNESS



---

Minerals.  
Nature. Craftmanship.

Natural **minerals** and  
raw materials, combined  
in a **naturally**  
**random** pattern.

KOREAN  
SERIES

APPLICATION  
Areas



TECHNICAL  
Features

KITCHEN COUNTERTOP



LIGHTWEIGHT

DINING TABLE



WATERPROOF

LIVING ROOM



RESISTANT TO SCRATCHES

FURNITURE



RESISTANT TO HIGH  
TEMPERATURES

STAIRCASE



EASY TO CLEAN

OFFICE TABLE



RESISTANT TO BENDING

TABLE TOP



100% NATURAL

DOOR \ WINDOW  
FRAME



RECYCLABLE



HYGIENIC



RESISTANT TO UV RAYS





TOUCH FOR  
360 VIRTUAL & WALKTHROUGH



SIZE  
800x3000 MM

TPOLOGY  
FULL BODY

FINISH  
MATT

THICKNESS  
15 MM



BASALT FEEL





BASALT FEEL

Q  
U  
A  
L  
I  
T  
Y











TOUCH FOR  
360 VIRTUAL & WALKTHROUGH



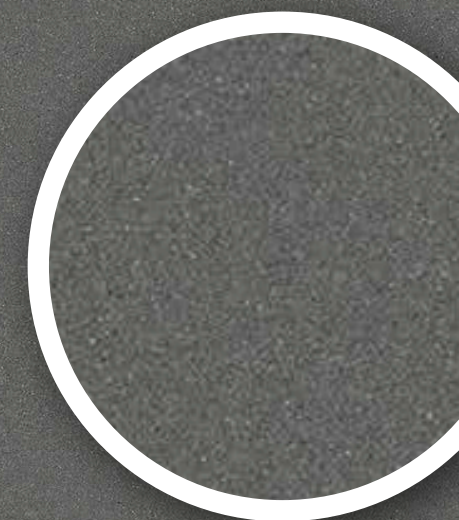
SIZE

800x2400 MM  
800x3000 MM

TPOLOGY  
FULL BODY

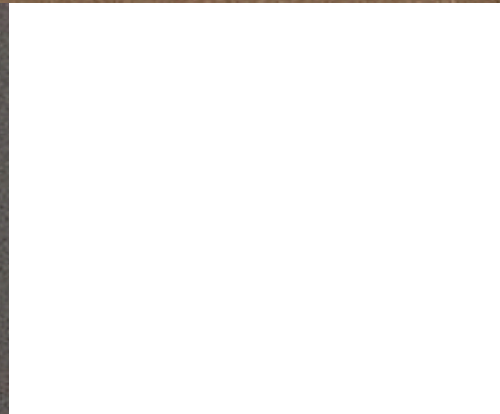
FINISH  
MATT

THICKNESS  
15 MM



GREYLITE FEEL





E  
X  
O  
T  
I  
C

GREYLITE FEEL







GREYLITE FEEL





TOUCH FOR  
360 VIRTUAL & WALKTHROUGH



SIZE

800x2400 MM

800x3000 MM

TPOLOGY

FULL BODY

FINISH

GLOSSY / MATT

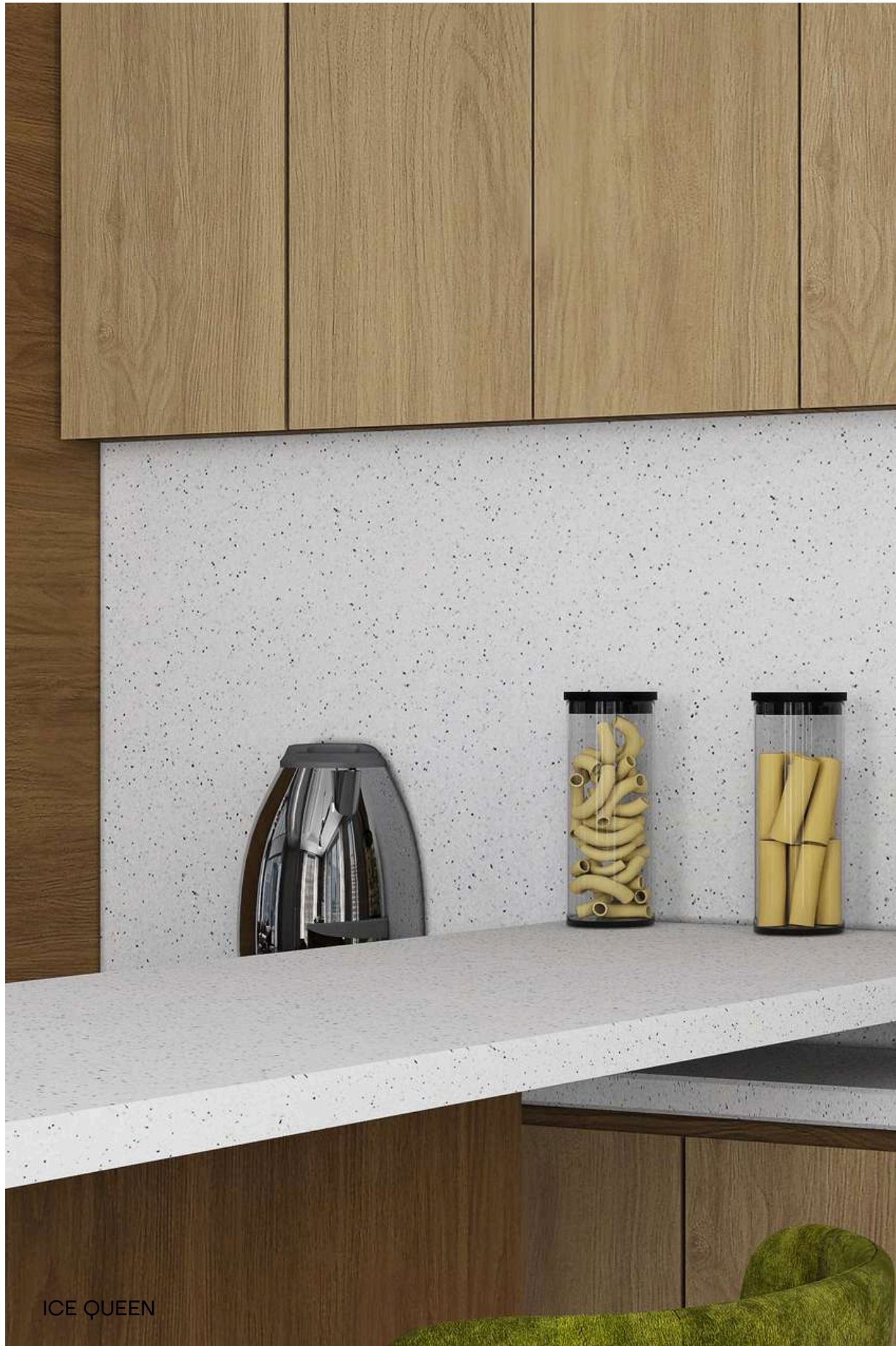
THICKNESS

15 MM



ICE QUEEN





B  
E  
A  
U  
T  
Y

ICE QUEEN











TOUCH FOR  
360 VIRTUAL & WALKTHROUGH

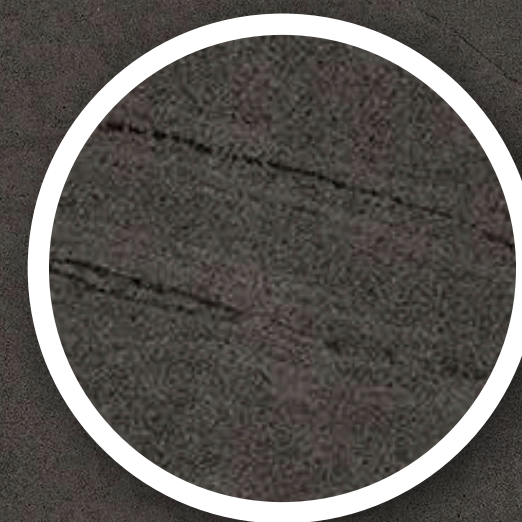


SIZE  
800x3000 MM

TPOLOGY  
FULL BODY

FINISH  
MATT

THICKNESS  
15 MM



LAVA ROCK





E  
N  
R  
I  
C  
H  
I  
N  
G









TOUCH FOR  
360 VIRTUAL & WALKTHROUGH



SIZE

800x2400 MM  
800x3000 MM

TPOLOGY  
FULL BODY

FINISH  
GLOSSY / MATT

THICKNESS  
15 MM



VANILA PEPPER





VANILA PEPPER

R  
E  
S  
P  
L  
E  
N  
D  
E  
N  
T







VANILA PEPPER





Cleaning & Maintenance

Our products are non porous (due to their high quality raw materials, stringent production parameters and state of the art technology), hence any dust or deposited waste cannot penetrate the surface.

For most cases only a damp cloth is sufficient for cleaning.

Regular cleaning highlights the aesthetic features of the surface and gives it exceptional shine.

For highly aggressive cleaning caused by some common food and substances follow the table below.

TYPE OF STAIN	CHEMICAL PRODUCT	EXAMPLE
Grease	Alkaline - Solvent	Detergent Ammonia, Backing Soda
Oil	Solvent Oxidant -	Alcohol, Liquid Bleach, Nail Paint Remover
Ink	Solvent Acid Acid	Hydrochloric Acid, Vinegar, Red Harpic
Rust	Acid Alkaline	Descaling Reagent, Hydro Chloric Acid
Lime	Alkaline - Solvent	Hydro Chloric Acid Ammonia, Liquid
Cement	Solvent Acid	Bleach Ammonia, Liquid Bleach Alcohol,
Wine	Solvent Oxidant	Thinner Hydro Chloric Acid Alcohol,
Coffee	Oxidant Alkaline	Thinner Liquid Bleach Liquid Bleach
Rubber		Liquid Bleach
Plaster		
Candle Wax		
Iodine		
Blood		
Ice Cream		

Note: It is recommended that any kind of stain needs to get clean immediately / as soon as possible.

Technical Specification

CHARACTERISTIC	STANDARD AS PER ISO13006:2018/ EN14411 Gr.BIa	MEAN VALUE	TEST METHOD
Regulatory Properties Deviation in			
Length and Width	± 0.30 % (±1.00mm)	± 0.10 % ± 5.00 % ±	ISO 10545-2 ISO
Deviation in Thickness	± 5.00 % (±0.50mm)	0.10 % ± 0.10% ±	10545-2 ISO
Straightness in Side	± 0.30 % (±0.80mm)	0.50 % ± 0.50 % ±	10545-2 ISO
Rectangularity	± 0.30 % (±1.50mm)	0.50 % >95%	10545-2 ISO
Surface Flatness Central Curvature	± 0.40 % (±1.80mm)	defects free ΔE <	10545-2 ISO
Surface Flatness Edge Curvature	± 0.40 % (±1.80mm)	0.30 Gloss Value>	10545-2 ISO
Surface Flatness Warpage	± 0.40 % (±1.80mm)	90 3 <Gloss	10545-2 ISO
Surface Quality	>95% defects free	Value<7 7<Gloss	10545-2 ISO
Small Color Difference(for Plain Colour)	ΔE < 1.00 as per	Value<18	10545-16 Gloss
Glossiness ( Polished)	mfg. as per mfg. as		Meter 60° Gloss
Glossiness (Matt)	per mfg.		Meter 60° Gloss
Glossiness (Satin/Posh)			Meter 60°
Structural Properties Water absorption			
Bulk density Massive Mechanical	≤ 0.50 %	≤ 0.060 %	ISO 10545-3
Properties Modulus of rupture Breaking	as per mfg.	Min. 2.28 g/cc	ISO 10545-3
strength thickness <7.5 Breaking			
strength thickness ≥7.5 Breaking	Min. 35.0 N/mm²	Min. 42.0 N/mm²	ISO 10545-4
strength thickness ≥(175.5mm)	Min. 700.0 N	Min. 1000.0 N	ISO 10545-4
Surface Mechanical Properties	Min. 1300.0 N	Min. 1800.0 N	ISO 10545-4
MOH S hardness #	Min. 1300.0 N	Min. 7500.0 N	ISO 10545-4
Surface abrasion resistance #			
Deep abrasion resistance #			
Thermal Hydrometric Properties	as per mfg.	Glossy Min. 4*/ Posh Min. 6	BS EN 15771
Moisture expansion	as per mfg.	Glossy Min. 2/ Posh Min. 3	ISO 10545-7
Thermal expansion(COE) at 100°C	Max. 175m3m	Max. 132mm3	ISO 10545-6
Thermal shock resistance			
Impact resistance(COR) #	Max. 0.06%(0.6mm/m)	Max. 0.02mm/m	ISO 10545-10
Frost resistance	as per mfg.	Max. 6.0 x 1-06	ISO 10545-8
Chemical Properties	Min. 10 Cycle	Min. 10 Cycle	ISO 10545-9
Resistance to staining glazed	Min. 0.55	Min. 0.55	ISO 10545-5
Resistance to household chemicals & swimming pool salts glazed	as per mfg.	Frost Proof	ISO 10545-12
Resistance to low concentrate acid and alkalis glazed	Min. Class 3	Min. Class 4	ISO 10545-14
Resistance to high concentrate acid and alkalis glazed	Min. Class GB	Min. Class GA	ISO 10545-13
Safety Properties	as per mfg.	Min. Class GLB**	ISO 10545-13
Skid resistance(DCOF-DRY) ##	as per mfg.	Min. Class GHB**	ISO 10545-13
Slip resistance(DCOF)( R value) ##			
Fire resistance			
	as per mfg.	Glossy P0(<¹²) / Posh ≥P¹(¹²-²⁴)	BS 7976-2
	as per mfg.	R9 to R¹³	DIN 51130
	as per mfg.	Fire Proof	N.A.

\*With Nano polished  
\*\* Except Hydrofluoric Acid & it's compound  
# Tiles Intended for use on floor  
## As per customer requirement

Packing Details

PRODUCT	BODY	SIZE	THICKNESS	TILES / BOX	COVERAGE AREA / BOX	WEIGHT (Kgs)
Glossy / Matt	Full Body	800x3000mm	15mm	1pc	25.83 Sq ft	84 Kgs
Glossy / Matt	Full Body	800x2400mm	15mm	1pc	20.67 Sq ft	67 Kgs





[Divaqeramika.com](http://Divaqeramika.com)

+383 49 600 046

[divaqeramika@gmail.com](mailto:divaqeramika@gmail.com)

+383 49 668 382